

GTXRaster CAD® Series



Installation Guide

2010
Revision 1 – 04/10

GTXRaster CAD® 2010Series Installation Guide

Introduction

Thank you for your interest in the GTXRaster CAD® 2010 Series products. This is the latest version of our AutoCAD based application from GTX Corporation, which enables you to utilise scanned paper drawings in your AutoCAD® 2010 environment.

Please note that the Demo DVD includes other GTX products, such as GTXImage CAD™ (which is our Windows standalone editing and conversion product), GTXOSR® (which is used for batch conversions of scanned drawings into vector) & GTXScanClean - for automatic, interactive & batch image clean-up. However, **this guide concentrates only on the GTXRaster CAD 2010 Series range of products.**

This demonstration DVD allows you to view the GTXRaster CAD Series in one of two ways. You can either view a self-running demonstration or you can try an evaluation copy of GTXRaster CAD®

Self Running Demonstration – Go to page 4

1. Run a copy of the **GTXRaster CAD® Series Menu Driven Demonstration**. This will give you a structured automatic demonstration of the functions and facilities of the various GTXRaster CAD® Series products.

Evaluation Copy – Go to page 6

2. You can install an **Evaluation Copy** of one of the **GTXRaster CAD® Series** products. This option allows you to experience the real capabilities of loading and working with scanned raster image files, including raster editing and raster conversion capabilities within GTX. It requires that you have full AutoCAD 2010 running and configured on your system. (Note – This 2010 version software will not work with AutoCAD LT) The evaluation (demo mode) software allows you to use all of the functionality on a restricted area of a loaded image. The demo mode area is 1000x1000 pixels, which represents approx. 125mm square area at a resolution of 200dpi.

Also available on this DVD is a technical “White Paper” **How to Integrate Paper with CAD**, which discusses in detail the reasons, issues and technology used to integrate paper based drawings into a CAD environment. If your company is addressing these issues for the first time we strongly recommend that you read this first. It is on the DVD in the INFO\MISC Directory called **Whitepaper.Doc or Whitepaper.PDF**.

GTXRaster CAD 2010 Series Brochure - providing full specifications on each level of the GTXRaster CAD® Series, are available in both PDF and Microsoft PowerPoint (PPT & PPS). These are to be found in the INFO/V12 Directory on the DVD.

A selection of GTX customer **Case Studies** are also included on the DVD - covering Aero Nautical, Maritime, Mechanical, Architectural, Defence, Electro Mechanical, Gas & Oil, Power/Utility, Telecoms, Local Government & Mapping/GIS applications. These Case Studies are in PDF format & can be found in the INFO/CASESTUDIES Directory on the DVD.

GTXRaster CAD® Series

Product Overview

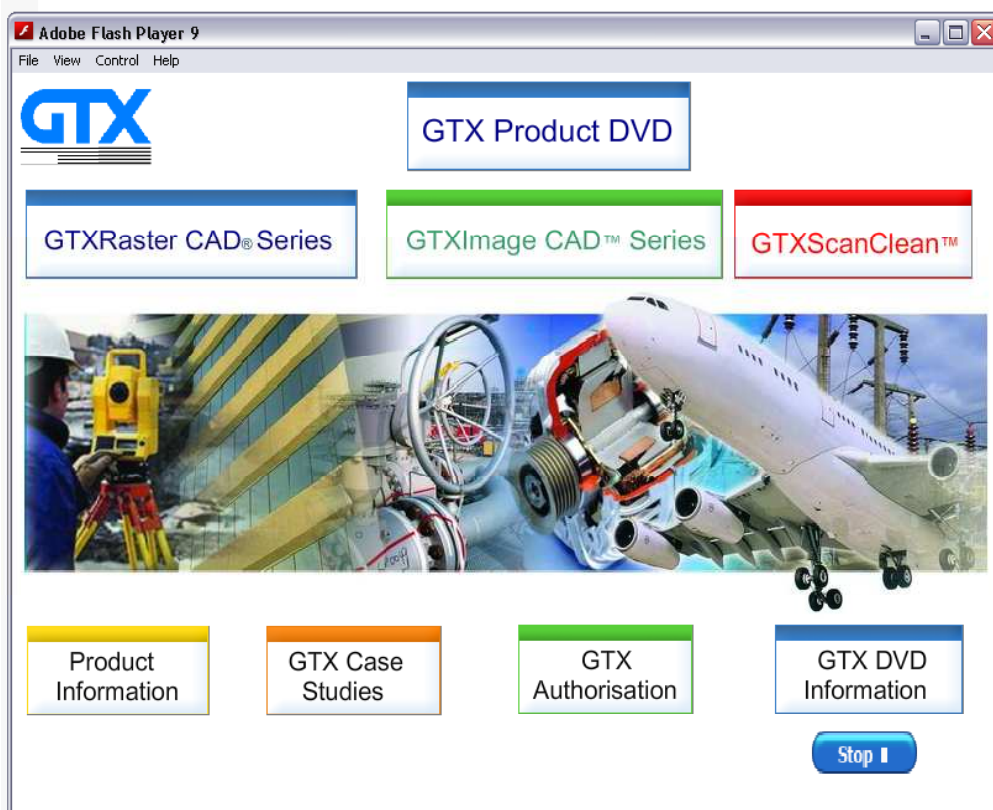
The **GTXRaster CAD® Series** is a third party application, which works with AutoCAD. Previous versions of GTXRaster CAD are available for AutoCAD 2009, 2008, 2007 & 2006. The current GTXRaster CAD 2010 Series works with AutoCAD 2010 under Windows 7 (32 & 64), Windows Vista (32 & 64), & XP (32 & 64). It consists of 4 main products:

GTXRaster Tools™ is a cost effective, yet powerful and easy-to-use solution for cleaning and enhancing scanned raster images. Bring your legacy paper drawings into your AutoCAD® environment and realise an immediate increase in production!

GTXRaster CAD®, the industry acclaimed “AutoCAD for Raster” is the most productive raster cleanup and editing software available for AutoCAD users. Modify and enhance your legacy paper drawings in your AutoCAD environment for use in your current design process.

GTXRaster CAD® PLUS contains all the raster editing and manipulation capabilities of GTXRaster CAD with the added functionality of automatic raster to vector conversion, powerful batch conversion technology and advanced text recognition for the AutoCAD environment.

GTXRaster R2V™ enhances your existing Autodesk Raster Design 2010® or other raster editor with the powerful functionality in a product that was developed to complement your existing application! GTXRaster R2V expands your existing AutoCAD environment with efficient raster cleanup tools, text and geometry conversion from raster to AutoCAD objects.



GTXRaster CAD® Self Running Demonstration

The GTXRaster CAD® self-running demonstration can run directly from the Demo DVD, alternatively for better performance it can be copied to your local hard disk to run.

GTX supply 10 GTXRaster CAD® Series self running Demo's on the DVD, they consist of the following topics:

Color Reduction	Color Separation
AllText IOP	IOP CLEAN
Raster Cleanup	Raster and Hybrid editing
CAD Conversion	TEXT Recognition
MAP Conversion	Warping

To run the self running demonstration from the DVD:

1. Insert the **GTX DVD-ROM** in to your PC DVD-ROM drive.

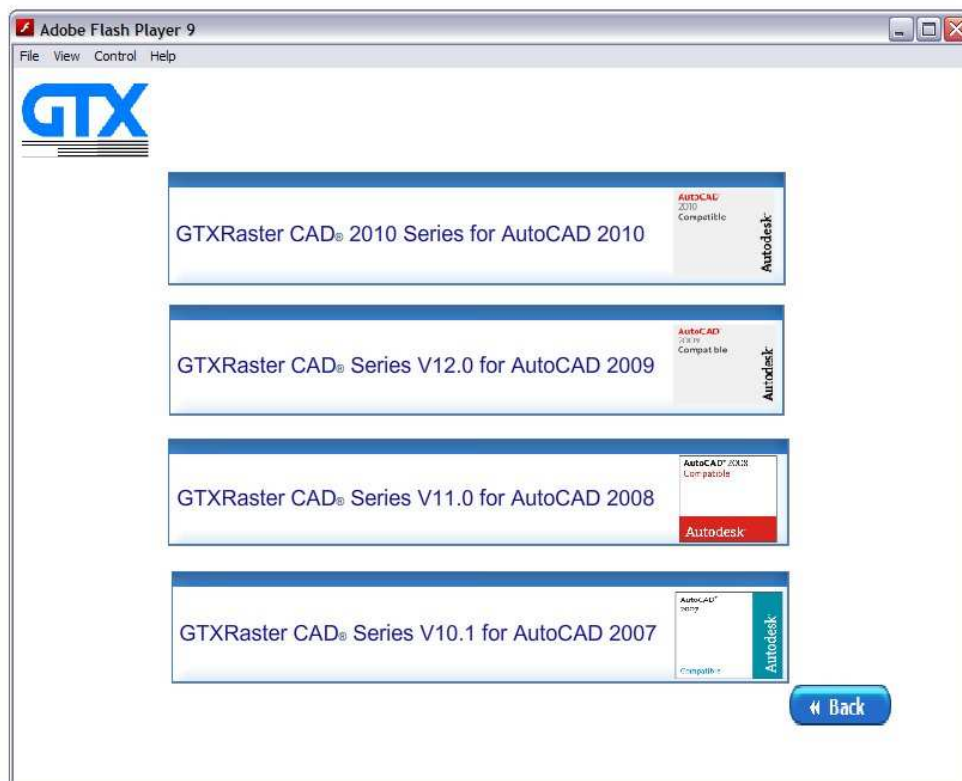
AutoRUN

2. If you have AutoRUN active on your system, a splash screen will appear with a number of option buttons. Select **GTXRaster CAD® Series** button followed by **GTXRaster CAD® 2010 Series** button, Then **Self Running Demo's** button. Now pick the **Demo Topic** you want to run by clicking the button, this will start the self-running demo.

Non AutoRUN

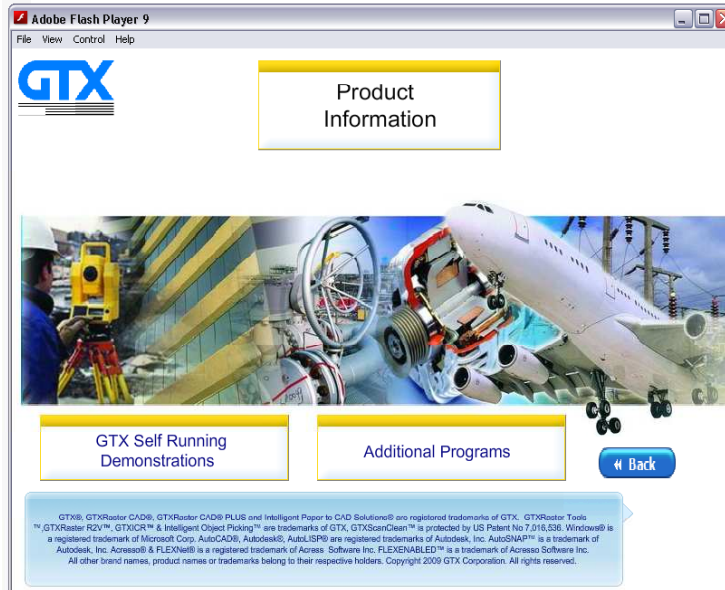
3. If AutoRUN is **not** active, the splash screen will not appear after inserting the DVD into your DVD-ROM drive. Instead, using explorer, browse to & select **SETUP.exe** on the DVD root directory.

Select **GTXRaster CAD® Series** button followed by **GTXRaster CAD® 2010 Series** button, Then **Self Running Demo's** button. Now pick the **Demo Topic** you want to run by clicking the button, this will start the self-running demo.

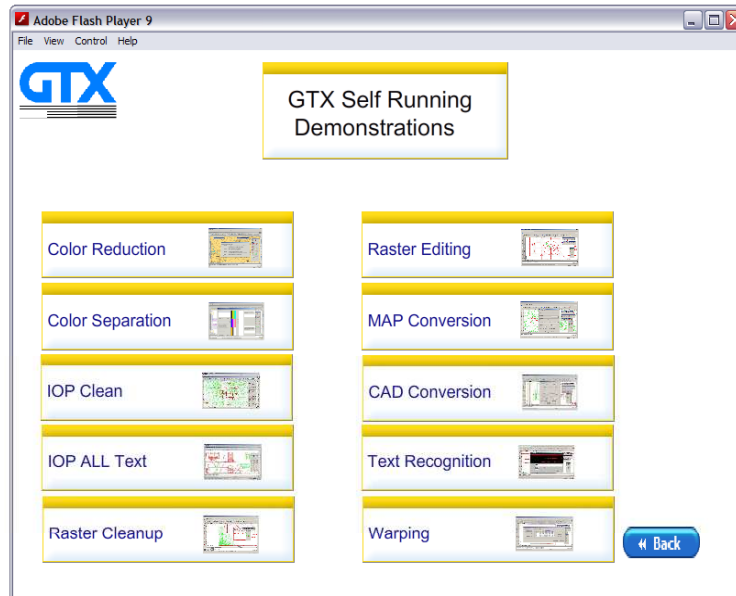


Running the Demo

Choose a product and the demo will show you an Overview or general functionality of the product. Some of the features can play a self-running video clip demonstration.



Feel free to explore the GTXRaster CAD capabilities at your leisure.



Color Reduction -

Reducing colors to a manageable number.

Color Separation -

Separate colors onto different layers.

All Text IOP -

Assisted selection of raster text.

IOP Clean -

Raster Cleanup & restoration tools.

Raster Cleanup -

Raster Cleanup & restoration tools.

Raster Editing -

Raster Editing operations.

MAP Conversion -

Raster to Vector conversion on a MAP contour drawing.

CAD Conversion -

Raster to Vector conversion on a CAD drawing.

TEXT Recognition -

Text conversion showing GTX ICR.

Warping -

How GTX can adjust a MAP drawing to make it more accurate.

GTXRaster CAD Evaluation Software - Installation

System Requirements

To install the GTXRaster CAD® 2010 Series evaluation software you will require the following configuration:

*	CPU	Pentium III or equivalent processor
*	Hard Drive	About 75mb hard disk space for program files
*	Memory	512 MB RAM
*	Swap Space	512 MB
*	Environment	Windows 7 (32 & 64 Bit)Vista (32 & 64 Bit) or XP (32 & 64 Bit)
*	AutoCAD	Full AutoCAD 2010 (not LT)

Installing the Software

Firstly ensure that you have AutoCAD 2010 installed & running, then follow these steps to install your software:

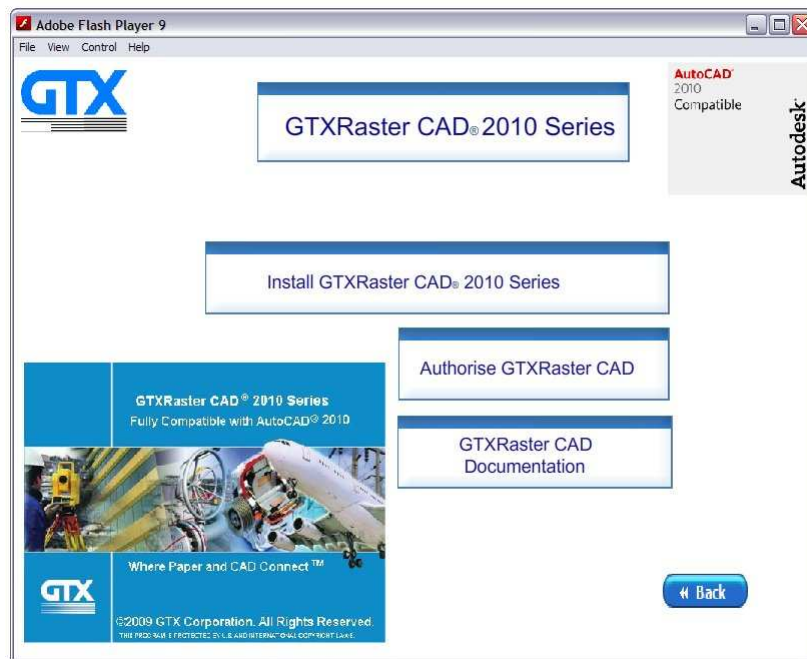
1. Insert the **GTX DVD-ROM** in to your PC DVD-ROM drive.

AutoRUN

2. If you have AutoRUN active on your system, a splash screen will appear with a number of option buttons. Select **GTXRaster CAD® Series** button followed by the **GTXRaster CAD® 2010 Series** button, this takes you to the GTXRaster CAD® Series for AutoCAD® 2010 product screen. Now pick the **Install GTXRaster CAD® 2010 Series** button, this will start the install process.

Non AutoRUN

3. If AutoRUN is **not** active, the splash screen will not appear after inserting the DVD into your DVD-ROM drive. Instead, using explorer, browse to & select **SETUP.exe** on the DVD root directory.
4. A splash screen will appear with a number of option buttons. Select **GTXRaster CAD® Series** button followed by the **GTXRaster CAD® 2010 Series** button, this takes you to the GTXRaster CAD® Series for AutoCAD® 2010 product screen. Now pick the **Install GTXRaster CAD® 2010 Series** button, this will start the install process.



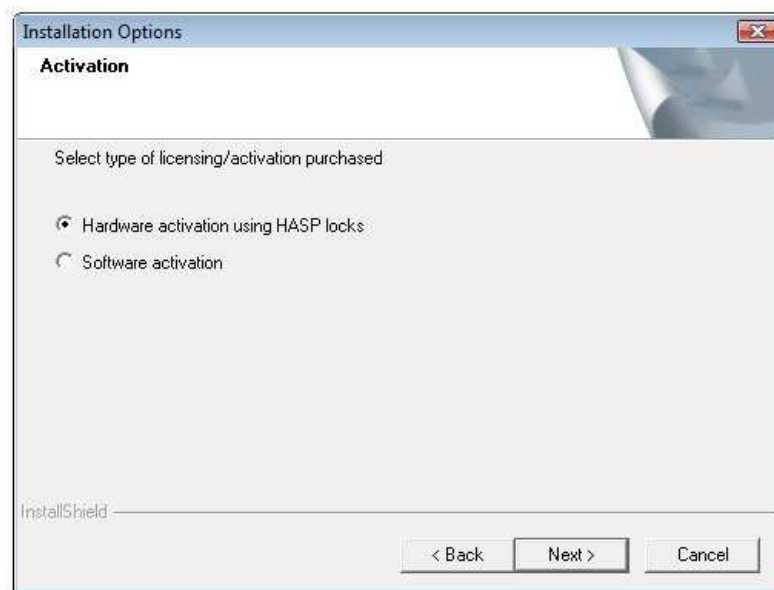
Running the Install

A splash screen will appear welcoming you to the InstallShield wizard for **GTXRaster CAD® 2010 Series**, select **NEXT**.

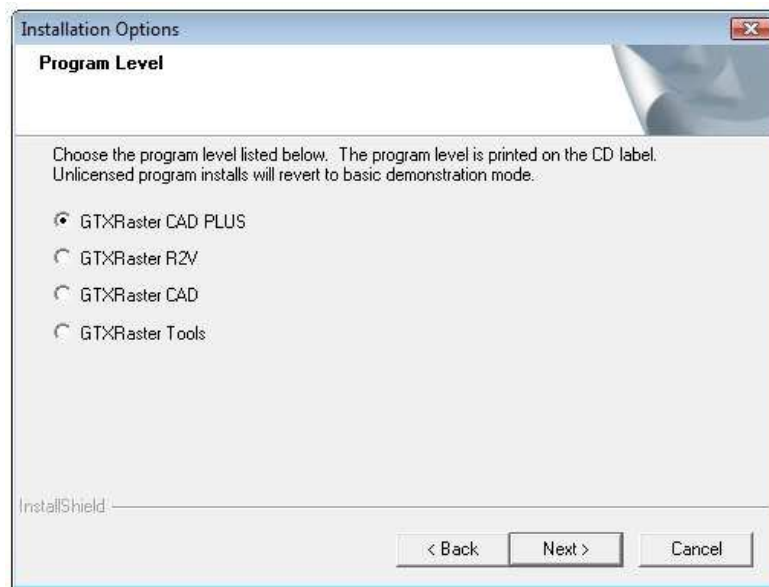
You will be asked if you wish to accept the **GTX software license agreement**, if you agree select **YES**.

You will be asked to select either **Demonstration** or **Licensed** versions of the product, select **Demonstration** then **NEXT**.

You will then be asked to select either **Hardware** or **Software** versions of the product, select **Hardware** then **NEXT**.

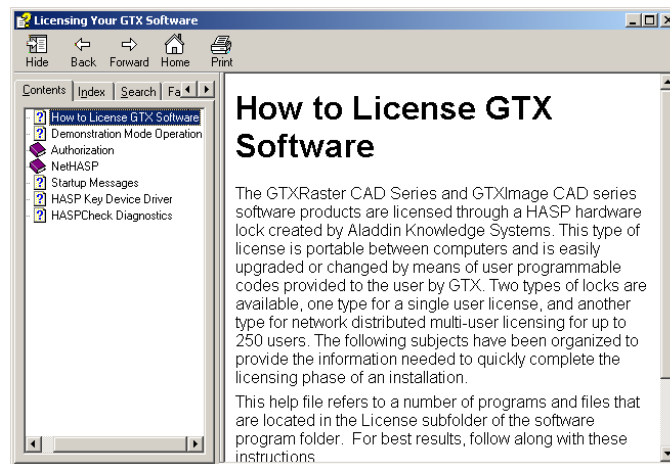


A dialog will ask you to select the program level you require. To assess the full benefits of the GTXRaster CAD Software, we recommend you select the **GTXRaster CAD® PLUS**, click **NEXT**.



5. A dialog will appear asking for the Destination Location to install GTX. We suggest you select the default. Select **NEXT**.
6. A dialog will appear asking for a Program Folder name to install into. We suggest you select the default. Select **NEXT**. The system will ask you to confirm your settings, click **NEXT**.
7. SETUP will install the program files.
8. InstallShield wizard is complete, select **FINISH**.

The installer will launch the SETUP guide for you to read.



The installation is now complete. To run GTXRaster CAD PLUS simply double click on the **GTXRaster CAD PLUS 2010** icon.



Uninstalling the Software

1. Insert the **GTX DVD-ROM** in to your PC DVD-ROM drive.

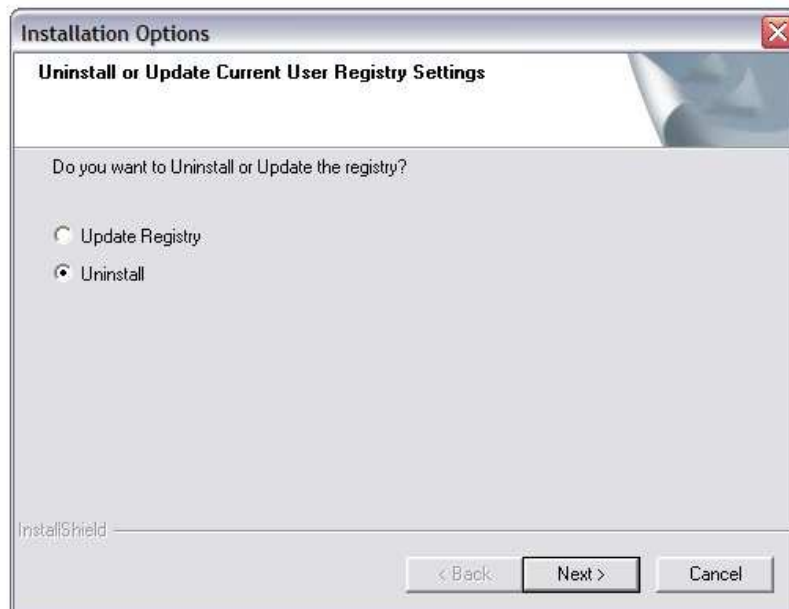
AutoRUN

2. If you have AutoRUN active on your system, a splash screen will appear with a number of option buttons. Select **GTXRaster CAD® Series** button followed by the **GTXRaster CAD® 2010 Series** button, this takes you to the GTXRaster CAD® Series for AutoCAD® 2009 product screen. Now pick the **Install GTXRaster CAD® 2010 Series** button, this will start the uninstall process.

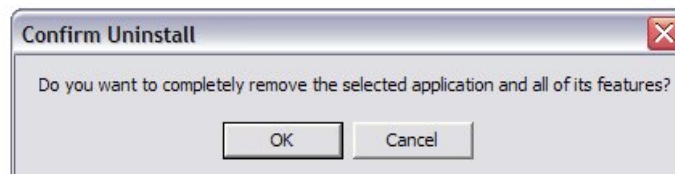
Non AutoRUN

3. If AutoRUN is **not** active, the splash screen will not appear after inserting the DVD into your DVD-ROM drive. Instead, using explorer, browse to & select **SETUP.exe** on the DVD root directory.
4. A splash screen will appear with a number of option buttons. Select **GTXRaster CAD® Series** button followed by the **GTXRaster CAD® 2010 Series** button, this takes you to the GTXRaster CAD® Series for AutoCAD® 2010 product screen. Now pick the **Install GTXRaster CAD® 2010 Series** button, this will start the un-install process.

The following screen will be displayed, select the Uninstall option.



You will be presented with the next option to Confirm Uninstall, select OK.



While uninstalling, a window will appear to show the progress of the uninstall.



When the uninstall procedure is complete select **Finish**.

We trust that this Installation Guide has given you a clearer understanding of how to install the GTXRaster CAD Series of products. For further information or questions on any of the GTX products on this DVD, please feel free to contact us for the name of your nearest GTX Authorised Reseller.

GTX Corporation
15333 North Pima Road
Suite 116
Scottsdale
AZ 85260, USA
Email: info@gtx.com
Phone: (480) 889 8600
Fax: (480) 889 8610

GTX Europe Ltd
Unit 8 Cedarwood
Chineham Park
Basingstoke, Hants
RG24 8WD, UK
Email: info@gtx.co.uk
Phone: +44 (0) 1256 814444
Fax: +44 (0) 1256 364887

REMARKS:

GTX®, GTXRaster CAD®, GTXRaster CAD® PLUS and Intelligent Paper to CAD Solutions® are registered trademarks of GTX.
GTImage CAD™, GTImage Edit™, GTImage CAD PLUS™, GTXSmartCAD Edit™, GTX@ICR PLUS™, Intelligent Object Picking™
AutoClean™ & GTXScanClean™ are trademarks of GTX. U.S. Patent No. 7,016,536 applies.

Windows® is a registered trademark of Microsoft Corp.

AutoCAD® & Autodesk® are registered trademarks of Autodesk, Inc.

FLEXNet® is a registered trademark of Flexera™ Software.

FLEXENABLED™ is a trademark of Flexera™ Software.

CQuanizer © is copyright of Jeff Proise 1996-1997

All other brand names, product names, service marks or trademarks belong to their respective holders.

©Copyright GTX Corporation 2010. All Rights Reserved.