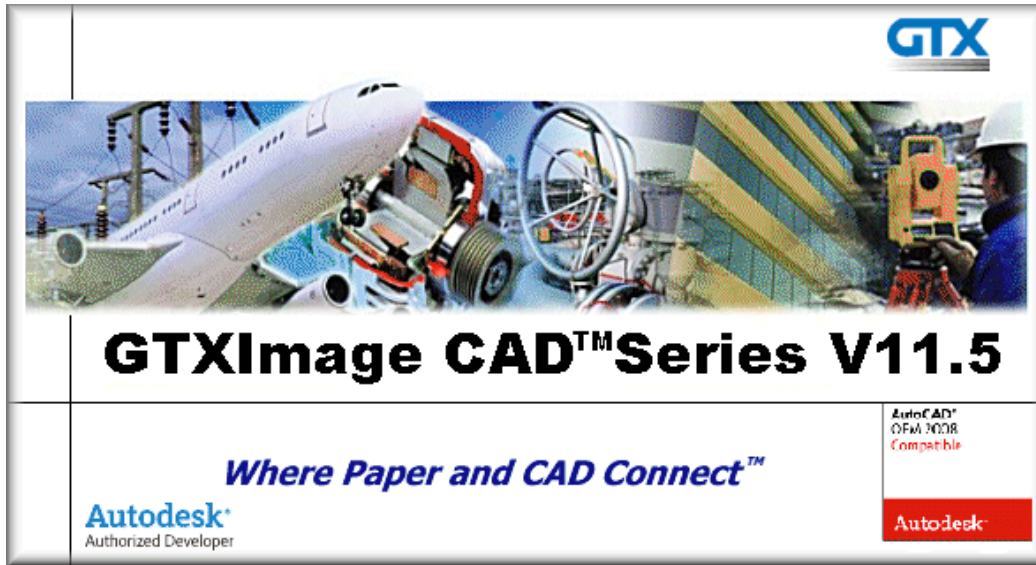


GTXImage CAD™ Series V11.5



Installation Guide

Version 11.5

Table of Contents

Table of Contents	Pg 2
Introduction	Pg 3
- CD Contents	
Product Overview	Pg 3
Installing GTXImage CAD or PLUS – Evaluation Copy	Pg 4
Uninstalling GTXImage CAD	Pg 7

GTXImage CAD™ Series V11.5
Demonstration CD
Installation & Training Guide

Introduction

Thank you for your interest in the GTXImage CAD Series, This is the latest Standalone software technology application from GTX Corporation, which enables you to manipulate and Raster-To-Vector convert scanned paper drawings.

This guide has been produced to help you get the most out of your Demo CD as quickly as possible. This guide is not intended to be a full training manual, it is intended to give the basic commands to allow you to install and run the GTXImage CAD Series product.

Please note that the Demo CD includes other GTX products, such as GTXRaster CAD® (which runs inside AutoCAD) and GTXOSR® (which is used for batch conversions of scanned drawings into vector). However, **this guide concentrates only on the GTXImage CAD Series products.**

Product Overview

The GTXImage CAD Series consists of two software products - GTXImage **CAD** & GTXImage CAD **PLUS**:

GTXImage CAD loads raster images and allows image clean-up, restoration & comprehensive editing.

GTXImage CAD PLUS provides the same functionality as GTXImage CAD, with the added capability to convert binary raster into AutoCAD vector entities & text.

Product Functionality.

		Product Functionality				
Product Level	Raster Cleanup	Raster Editing	CAD Drafting	R2V Conversion	ICR Text Conversion	Batch Conversion
GTXImage CAD	X	X	X			
GTXImage CAD PLUS	X	X	X	X	X	X

This demonstration CD allows you to install an **Evaluation Copy** of **GTXImage CAD Series** products. This option allows you to experience the real capabilities of loading and working with scanned raster image files, including raster editing and raster conversion capabilities within GTX. It requires **no** additional software (such as AutoCAD) to run. The evaluation software allows you to use all the functionality except you cannot Save and Plot modified files. To evaluate the product to its full we suggest that you Install GTXImage CAD **PLUS** level product.

Also available on this CD is a technical "White Paper" **How to Integrate Paper with CAD**, which discusses in detail the reasons, issues and technology used to integrate paper based drawings into a CAD environment. If your company is addressing these issues for the first time we strongly recommend that you read this first. It is on the CD in the INFO\MISC Directory called **WhitePaper.Doc** or **WhitePaper.PDF**

Product Data Sheet providing full specifications on GTXImage CAD Series, is available in both Windows Help and Microsoft Write formats. These are to be found in the INFO\CAD Directory on the CD.

GTXImage CAD Evaluation Software - Installation

System Requirements

To install the GTXImage CAD evaluation software you will require the following minimum configuration:

CPU	Intel® Pentium® 4 processor, 2.2 GHz Recommended
Operating System	Microsoft® Windows Vista™, Windows® XP Home and Professional (SP2), Windows® 2000 (SP4)
Drive space	350 MB free hard disk space for installation
Virtual memory	512 MB swap file, or greater
Memory	512 MB RAM
Display	1024 X 768 VGA with True Color

Installing the Software

Important Note: Windows Vista users must be logged in as “Administrator” in order to install GTXImage CAD Series. In addition, users should NOT install GTX software under the "Program Files" directory, instead we recommend that the Administrator installs the GTX software in the local directory or your department's dedicated directory for 3rd party applications.

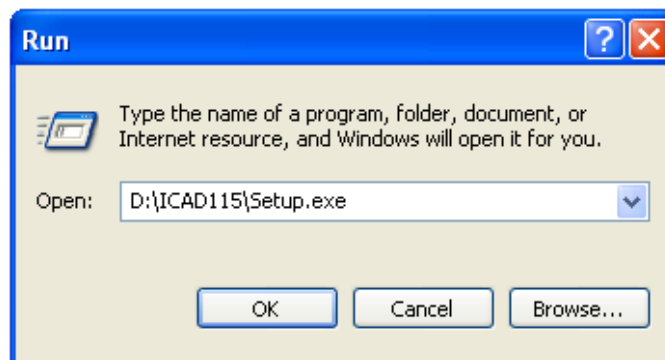
1. Insert the **GTX Demonstration CD-ROM** in your PC CD-ROM drive.

AutoRUN

2. If you have AutoRUN active on your system, a splash screen will appear with a number of option buttons. Select **GTXImage CAD SeriesV11.5** option and click next. Please review the EULA and accept it to continue the installation. Please go to the section **Running the install** on Page 5.

Non AutoRUN

3. If AutoRUN is **not** active, the splash screen will not appear after inserting the CD into your CD-ROM drive. Instead select **Start/Run** if using Windows 95 or NT 4.0.
4. With the Browse button select **Setup.exe** from the **\\ICADV115** Directory on the root of the CD drive.



5. When the file is displayed, Select **OK**.
6. Setup will initialise and after a few seconds the opening dialog will appear.

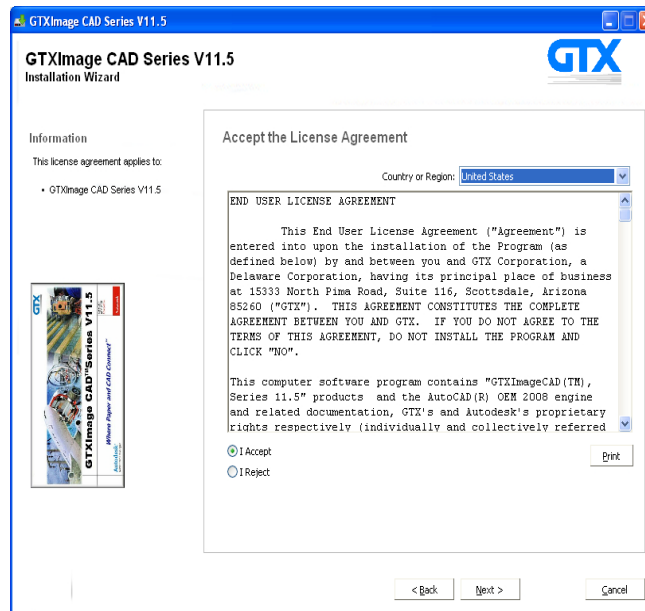
Running the Install

This will start up the install wizard, it will start to prepare files to load the GTXImage CAD series programs.

Select **Next** in the install wizard to continue installing GTXImage CAD Series



You will be asked if you wish to accept the **GTX software license agreement**, if you agree select **I accept** then **Next**.



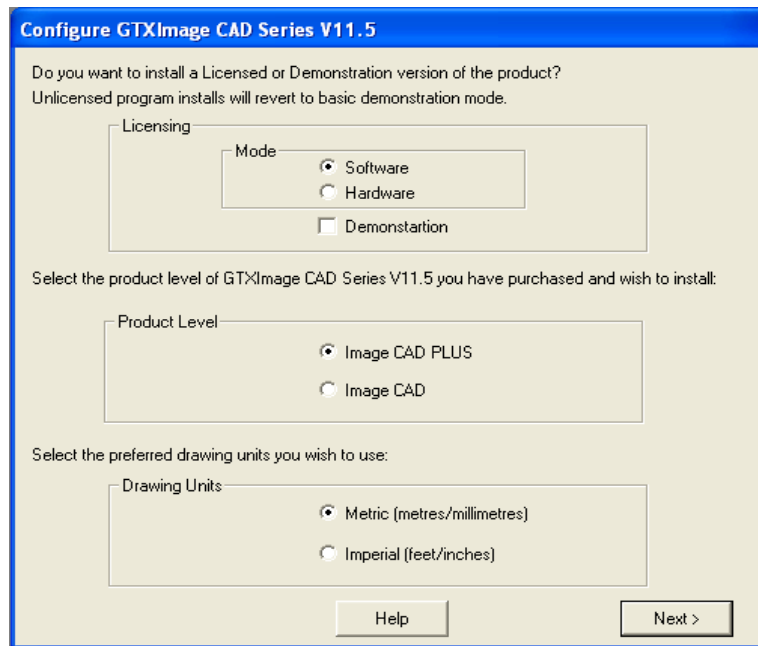
You will now be asked to select a Destination Folder for the application or to except the default, select **Next**.

SETUP will install the program files to your PC - It may take a few minutes.

You will be prompted to select either Demonstration or Licensed versions of the product, select **the appropriate licensing mode, and click Demonstration. Please review the Software/Hardware Licensing instruction found on the Product CD.**

You will be asked to select your chosen product level – GTXImage CAD or GTXImage CAD PLUS. To view the full capability of the Series select **GTXImage CAD PLUS.**

You will be asked to Install for metric or imperial Raster units, Select **appropriate measurement system** then **Next.**



When complete select **Finish**. A licencing dialog will be displayed & the installation is now complete.

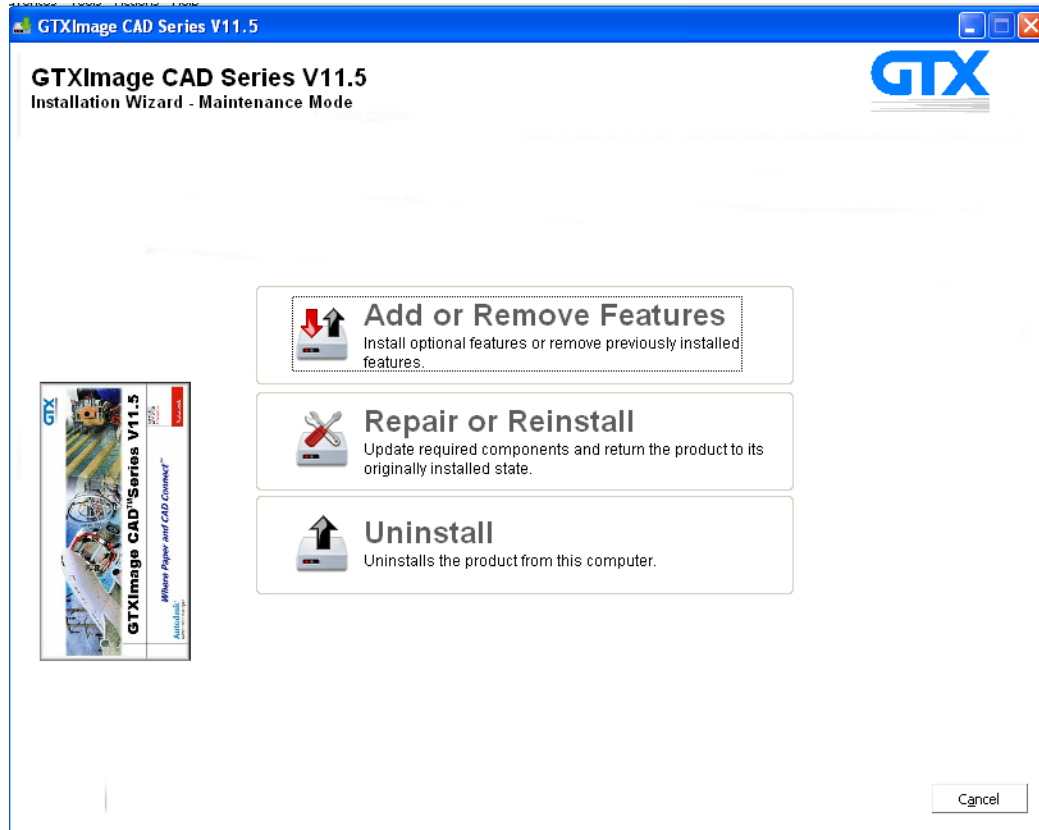
To run GTXImage CAD simply double click on the **GTXImage CAD Series V11.5 Icon.**



Uninstalling the Software



To Uninstall simply go to **Start - Settings - Control Panel – Add/Remove Programs – Image CAD Series V11.5** or re-insert the CD Install GTXImage CAD Series V8.8 again. You will be prompted to remove the product.

This will start the uninstall wizard. Upon running Uninstall, a dialog appears making sure you want to remove the application from your system. Click **YES**.



While uninstalling a window will appear to show the progress of the uninstall.

When Uninstall wizard is complete, click **Finish** to exit.

GTXImage CAD™ Series V11.5

Where Paper and CAD Connect™

Autodesk
Authorized Developer

AutoCAD®
OFM 3008
Compatible

Autodesk

GTX Corporation
15333 North Pima Road,
Suite 116
Scottsdale, Arizona 85260
USA

Email: info@gtx.com
Phone: (480) 889 8600
Fax: (480) 889 8610

GTX Europe Ltd
Unit 8 Cedarwood,
Chineham Business Park,
Basingstoke, Hants
RG24 8WD-UK

Email: info@gtx.co.uk
Phone: +44 (0) 1256 814444
Fax: +44 (0) 1256 364887

REMARKS:

GTX®, GTXRaster CAD®, GTXRaster CAD® PLUS and Intelligent Paper to CAD Solutions® are registered trademarks of GTX.

GTXImage CAD™, GTXImage Edit™, GTXImage CAD PLUS™, GTXSmartCAD Edit™, GTX@ICR PLUS™, Intelligent Object Picking™

AutoClean™ & GTXScanClean™ are trademarks of GTX. U.S. Patent No. 7,016,536

Windows® is a registered trademark of Microsoft Corp.

AutoCAD® & Autodesk® are registered trademarks of Autodesk, Inc.

CQuanizer © is copyright of Jeff Proise 1996-1997

All other brand names, product names, service marks or trademarks belong to their respective holders.

©Copyright GTX Corporation 2008. All Rights Reserved.