



GTXRaster CAD[®] 2010 Series

For AutoCAD 2010

April 2009

Thank you for purchasing the GTXRaster CAD 2010 Series for AutoCAD 2010. This document contains information that may not have been published in the User Manual and describes changes made to the GTXRaster CAD Series software or its installation since V12.0 and will inform you of the current version's status.

Installation and Authorization

Platform:

GTXRaster CAD 2010 Series for AutoCAD 2010 runs on Windows Vista (32 bit), and Windows XP.

AutoCAD Profiles:

AutoCAD profiles are used to manage user configuration parameters and they are stored in the Windows registry. The installation will place a new icon on your desktop. Please refer to the AutoCAD customisation guide for more details about profiles.

AutoCAD 2010 Workspaces:

AutoDesk has introduced the "Workspace" as a way to organize and manage sets of menus, toolbars and dockable windows. Users may switch between workspaces to present a display of their custom choice of drawing tools. Upon installation, the GTXRaster CAD Series program is presented as an Enterprise customisation, which is not automatically associated with the main AutoCAD workspace environment.

GTX strongly recommends the creation of a new Workspace upon installing the GTXRaster CAD 2010 Series for AutoCAD 2010. This is done by entering the WSSAVE command at the AutoCAD command line. You may then enter a Workspace name of the user's choice in the resulting **Save Workspace** dialog.

More information about Workspaces is available on the AutoDesk's website.

Un-Installation:

Use the Add/Remove Programs feature of the Control Panel to remove the program files.

NEW FEATURES:

In line with latest developments made by AutoDesk, GTX has re-designed the user interface to support the functionality of AutoCAD's ribbon. This new feature is designed to eliminate the cluttering of the visible workspace by multiple toolbars and conveniently place all relevant operations.

GTX is pleased to announce the addition of three new raster editing commands and a new raster picking ability: Draw Multiple Lines, Draw Rectangle, Slice Raster and IOP Outside.



gLINE2 draws multiple raster lines in the current raster image



gRECTANGLE draws a raster rectangle in the current raster image



gSLICE separates raster objects that should not be joined. A two pixel wide gap is created along a pick line selected by a starting point and an ending point.



IOP OUTSIDE Selects all raster outside a rectangular window

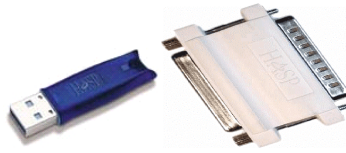
Software Licensing:

Beginning with Raster CAD Series V9.1, GTX introduced a **Acesso software licensing** alternative to the Aladdin hardware lock license. Software licensing in GTX Raster CAD 2010 Series is available in a single user standalone version and a networked floating license multiple user version. Installation of standalone software licensed GTX Raster CAD 2010 Series is dedicated to a particular personal computer (whereas a hardware lock licensed installation is portable

from computer to computer). The networked floating software license is distributed from a License Server System, which is dedicated to a particular computer. Access to a floating GTX software license is then available to any personal computer that shares a common network with the License Server System.

Hardware Lock Licensing:

Whether you are a new GTXRaster CAD Series user or if you upgraded from an earlier release, you must re-authorize your HASP to run 2010 Version. Without authorization, GTXRaster CAD 2010 Series will only run for a limited number of times. **To authorize your software, please follow the instructions in your User Manual.** You will need to provide GTX with your serial number, which is printed on your HASP Security key and your HASP ID, which is identified by running the GTX CUSTOMER.EXE program.



Configuration File

The configuration file, GTXRAST.CFG, controls many aspects of how the GTXRaster CAD Series will operate. Consult the online User's Manual for more detailed information on the configuration file.

Known Problems - :

1. This version does not preserve user-definable data stored in the raster file header. To be compliant with the AutoCAD Image Support Module, GTX uses the AutoCAD 2009 technique for loading raster files, which does not support user-definable data in the headers.
2. Zig-Zag line and text within complex line types may not convert from vector to raster correctly.
3. When using gAUTOSNAP with only Endpoint configured in the OSNAP command, clicking many points very rapidly may cause GTXRaster CAD to crash. To prevent this, use more than one OSNAP method at a time (i.e., Nearest and Intersection) and select points at a gradual or normal rate.
4. The AutoCAD UNDO command will only undo 10 raster operations. Due to the way GTX operates with the AutoCAD Image support module this relates to approximately 4 or 5 GTX raster undo operations.

5. With AutoCAD 2009 AutoDesk rationalised and reduced the range of supported raster formats. This means that some older and more obscure raster formats will no longer load or save within AutoCAD. If you have files with formats that are no longer supported, you can use the **GTX Rastrans** program to convert unsupported file formats into a suitable supported format.

Effect of AutoCAD 2009 on Earlier Version of GTXRaster CAD Series:

AutoDesk has made major modifications to their Imaging Support Module in AutoCAD 2009 and other R17.2 based products and GTX has engineered GTXRaster CAD 12.0 Series to account for these modifications.

However, if AutoCAD 2009 is installed on a system that already contains operational GTXRaster CAD Series 11.0, 10.1, 9.1, 9.0, 8.6, 8.5, 8.1, 8.0 these older products may cease to operate properly. This is because those versions of the GTXRaster CAD Series were based on previous versions of AutoCAD, and were released before the AutoCAD 2009 and R17.2 based products. GTXRaster CAD Series V12.0, has been developed to operate correctly on AutoCAD 2009.

REMARKS:

GTX®, GTXRaster CAD®, GTXRaster CAD® PLUS and Intelligent Paper to CAD Solutions® are registered trademarks of GTX.
GTXImage CAD™, GTXImage Edit™, GTXImage CAD PLUS™, GTXSmartCAD Edit™, GTX@ICR PLUS™, Intelligent Object Picking™
AutoClean™ & GTXScanClean™ are trademarks of GTX. U.S. Patent No. 7,016,536 applies.
Windows® is a registered trademark of Microsoft Corp.
AutoCAD® & Autodesk® are registered trademarks of Autodesk, Inc.
Acesso® & FLEXNet® is a registered trademark of Acesso Software Inc.
FLEXENABLED™ is a trademark of Acesso Software Inc.
CQuanizer © is copyright of Jeff Proise 1996-1997

All other brand names, product names, service marks or trademarks belong to their respective holders.
©Copyright GTX Corporation 2009. All Rights Reserved.